

# ECONOMAX

AIR CYLINDERS

DESIGNED FOR TRUCKS AND TRAILERS



**CORROSION RESISTANT**

**ICE RESISTANT SEALS**

**DURABLE**

**BUILT  
TO LAST**



[www.economax.ca](http://www.economax.ca)

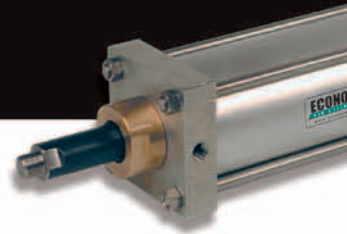
# ECONOMAX

## AIR CYLINDERS

### FEATURES:

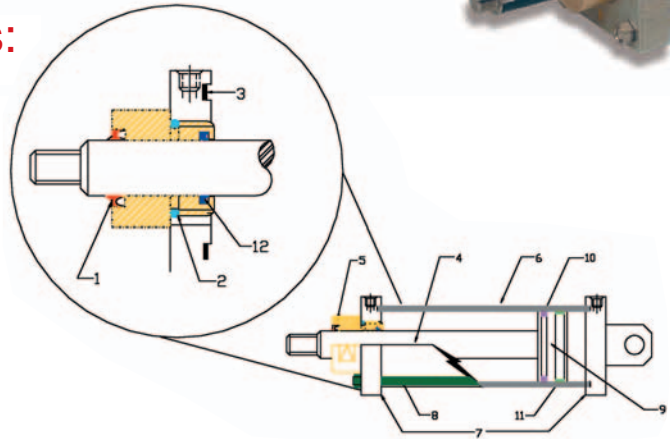
- LONG LIFE
- PRE LUBRICATED
- 100% TESTED
- REPAIRABLE
- 250 PSI AIR

- LARGE BEARING
- CORROSION RESISTANT
- MADE IN CANADA
- NITRATE ROD
- STAINLESS TIE ROD & NUTS



## Air Cylinder Construction Features:

1. **Rod Wiper:** Urethane HW style wiper and secondary seal. Keeps dirt out. -65 to +220F
2. **Seal:** O-Ring gland seal. -65 to +220F
3. **End Seal:** Buna N gasket -65 to +220F
4. **Piston Rod:** Black nitrated ground piston rod provides superior corrosion resistance, better lubrication retention and dent resistance. Surface will not flake and cut rod seal like chrome plated shafting.
5. **Bearing:** 660 solid bearing bronze. Note extra long bearing surface for maximum support and resistance to side load.
6. **Tube:** Aluminum alloy tube with a hard-coated "Alumite" smooth bore that has excellent resistance to sliding type wear and abrasion. All cylinders are pre-lubricated for millions of trouble-free cycles. Composite tube also available.
7. **End Caps:** Steel with yellow zinc dichromate finish for superior strength and corrosion resistance.
8. **Tie Rods:** Stainless steel with stainless nuts for corrosion resistance.
9. **Piston:** Aluminum 6061T6 machined one piece, anaerobically and mechanically locked to the piston.

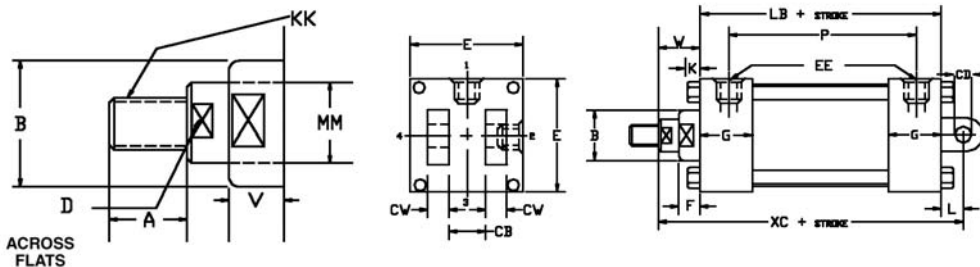


10. **Piston Seal:** Buna N locking T-Seal, combination of hard split back up rings on each side of sealing element provides a non-spiraling, ice resistant durable seal. -65 to +220
11. **Wear Strip:** Reinforced nylon with bronze properties. Prevents tube scoring and helps with breakaway in freezing conditions.
12. **Rod Seal:** HRU 80 durometer Buna N style U cup Navy spec. AN6266 -40 to +250F

## Dimensions:

BORE	B	CB	CD	CW	D	E	EE NPT	F	G	L	K	MM	V	W*	ADD STROKE		
															LB*	P*	XC*
2 1/2	2	3/4	1/2	1/2	13/16	3	1/4	1	1	3/4	5/16	1	1.042	1 3/4	3 1/4	2 1/4	4 3/4
3 1/4	2	1 1/4	3/4	5/8	13/16	3 3/4	1/4	1	1	1 1/4	3/8	1	1.042	1 3/4	3 1/4	2 1/4	6 1/4
4	2	1 1/4	3/4	5/8	13/16	4 1/2	3/8	1	1	1 1/4	3/8	1	1.042	1 3/4	3 1/4	2 1/4	6 1/4
5	2	1 1/4	3/4	5/8	13/16	5 1/2	3/8	1	1	1 1/4	1/2	1	1.042	1 3/4	3 1/4	2 1/4	6 1/2
6	2 3/8	1 1/2	1	3/4	2	6 1/2	1/2	1	1 1/4	1 1/2	5/8	1 3/8	1.042	1 3/4	4	2 3/4	7 1/4
8	2 3/8	1 1/2	1	3/4	2	8 1/2	1/2	1	1 1/4	1 1/2	5/8	1 3/8	1.042	1 3/4	4 1/8	2 7/8	7 3/8

\* Minimum dimension. Typical are usually longer as shown on the "Stock Size List". For Stock Size List contact our Sales Department



## Rod Thread Dimensions:

ORDER CODE	KK	A
A	5/8-18	1/2
B	7/16-20	3/4
C	1/2-20	3/4
D	3/4-16	1 1/8
F	1-14	2 1/4

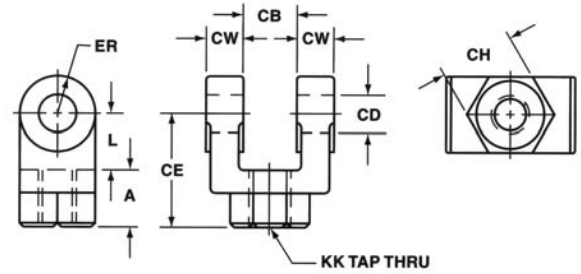


# DESIGNED FOR TRUCKS AND TRAILERS

## Accessories:

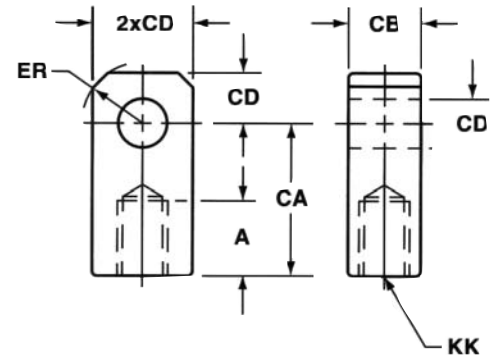
### Rod Clevis

	A	CB	CD	CE	CH	CW	ER	KK	L
BDC-07M/ZD	1 1/8	1.263	3/4	2 1/8	1 3/8	0.62	3/4	3/4-16	1
BDC-07-1	1 1/8	1.263	1	2 13/32	1 1/4	0.62	3/4	3/4-16	1 1/4
BDC-07-6ZD	1 7/16	0.80	3/4	6 5/64	N/A	0.42	3/4	3/4-16	4 9/16
BDC-061/ZD	1/2	0.54	1/2	1 3/4	N/A	0.37	1/2	5/8-18	1 1/4
BDC-10M	1 5/8	1.523	1	2 15/16	1 1/2	0.75	1	1-14	1 3/8



### Rod Eye

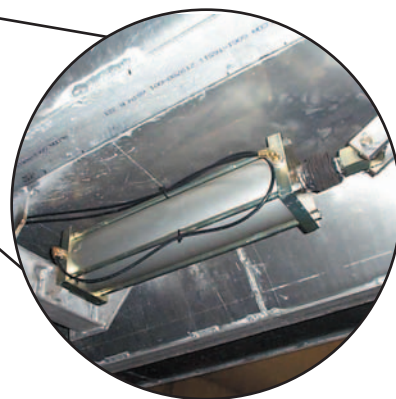
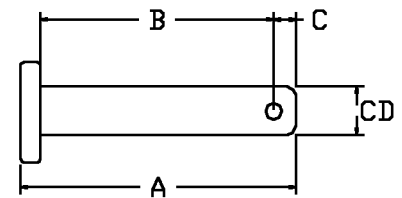
	A	CA	CB	CD	ER	KK
BDE-07ZD	1 1/8	2	1 1/4	3/4	7/8	3/4-16
BDE-05	1	1 1/2	3/4	1/2	9/16	7/16-20
BDE-10	1 5/8	2 13/16	1 1/2	1	1 3/16	1-14



### Pins

	CD	A	B	C	D
ZY-CP-230	1/2	2.410	2.093	0.14	0.14
ZY-CP-236	1/2	2.912	2.580	0.14	0.14
ZY-CP-264	5/8	2.212	1.857	0.15	0.14
ZY-CP-270	5/8	3.217	2.849	0.14	0.15
ZY-CP-284	3/4	2.258	1.865	0.14	0.14
ZY-CP-290	3/4	3.258	2.858	0.15	0.15
P-05-KO	1/2	1.665	1.35	0.16	0.15
CLPY-1000-3000	1	3.342	2.780	0.226	0.20

Plated cotter pins included with all pins.



**AIR GATE AND  
TARP PULL SYSTEMS**

**ECONOMAX**  
AIR CYLINDERS

